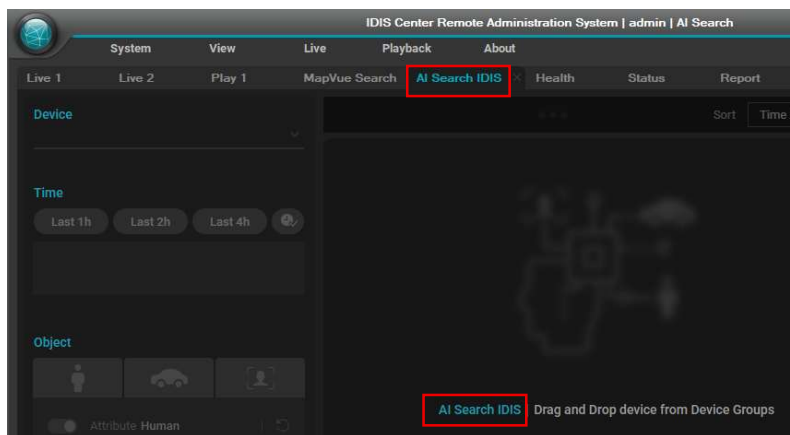
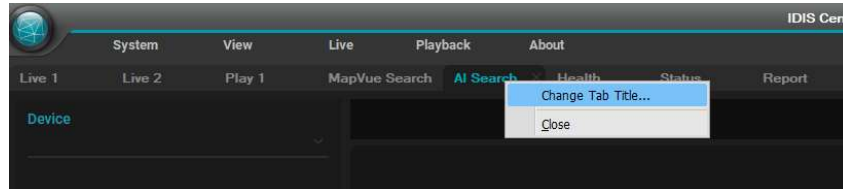


# Release Notes for IDIS Center v6.9.0

## 1. User Interface & Experience

- Enhanced clarity in AI Search by ensuring the **tab name** and on-page title match after tab name change.



- A-Cut Monitoring pop-up page displays smoothly after restarting IDIS Center, even when previously viewed in **full-screen mode**.
- Updated the font version for Web Front-end font and system font.

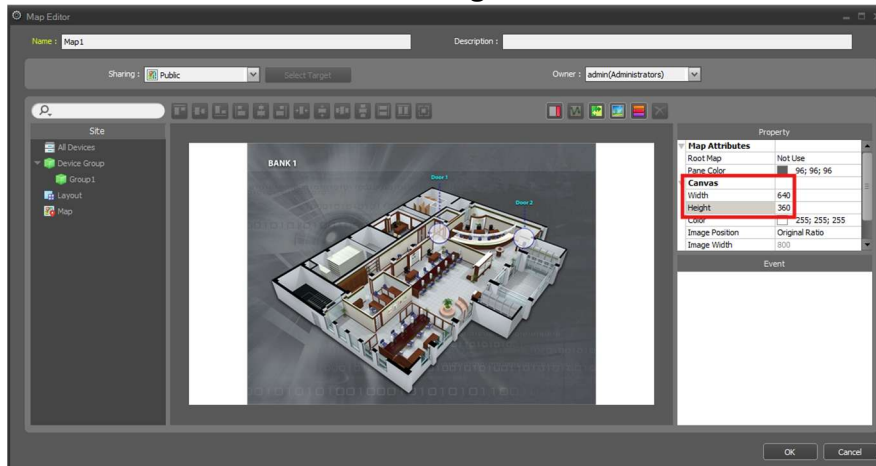
### a. Web Front-end font

- roboto-v32 -> roboto-v49
- roboto-condensed-v27 -> roboto-condensed-v31
- roboto-mono-v23 -> roboto-mono-v31
- noto-sans-kr-v36 -> noto-sans-kr-v38
- kanit-v15 -> kanit-v17

### b. System font

- Roboto 2.137 -> 3.009
- RobotoCondensed 3.008
- RobotoMono 3.000 -> 3.001

- Improved **Map** usability by ensuring background images display correctly, even when the canvas is smaller than the image.



## 2. Security & System Improvements

- Improved **G2Client shortcut behavior** to prevent an infinite loop of the Calculator app opening via CEF when using the command `--utility-cmd-prefix=calc.exe`, addressing a potential security vulnerability.

## 3. Miscellaneous Enhancements

- Updated WebView2 to version v142.0.3595.53 for improved compatibility and stability.
- Updated VNC Viewer from v7.13.1.57 to v7.15.0.17, enhancing remote access reliability.
- Improved CCF clip file browsing speed in G2ClipLauncher, providing faster and smoother navigation.
- Updated Image Processing Intel IPP to version v2022.3.0, boosting image processing performance.
- Enhanced device registration and deletion performance by leveraging a memory database.

## 4. Default Remote Sites registration is available for ISS Client

- This new feature enables default remote site registration in the ISS Client, making it easier for users to centrally manage and deploy remote site information. This feature requires an additional installation step in IDIS Center as described below.
- Installation of IDIS Center:
  - a. Run `setup.exe` file after adding a `setup.remotesite.json` file in the IDIS-Center-v6.9.0 folder or the `bin\` directory.
  - b. Open ISS Client and see default remote sites below.



- Users can also add default remote site information to an existing ISS Client following steps
  - a. Go to the path of IDIS-Center\Client\profile where ISS Client is installed.
  - b. Add *RemoteSite.default.json* file and open ISS Client
- JSON files format is UTF-8 + BOM encoding. Please find attached sample file.

End of File